

# Head Cap & Turbine Cartridge Replacement Kit

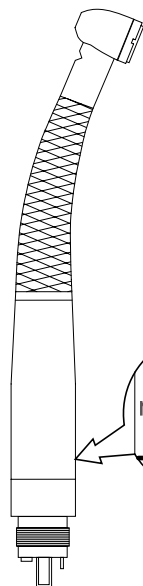
[002-10512-00]

All Standard Head High-Speeds

## Components:

Head Cap Assy.....	1
Head Cap Wrench.....	1
Turbine /Chuck Cartridge.....	1
Load Bearing Springs.....	1

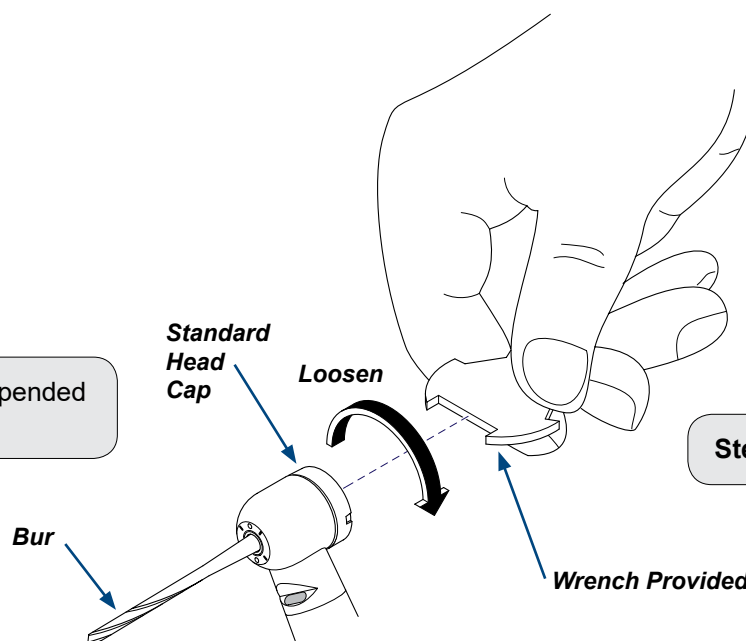
Service Kit for these Handpieces
002-10546-00
002-10548-00
002-10549-00



**Handpiece Part #**

**Step 1:** Verify you have the correct standard head cap & standard turbine cartridge replacement kit for your handpiece.

**Step 2:** Wear exam gloves and secure an expended standard length bur in chuck.



**Step 3:** Loosen head cap with wrench provided.



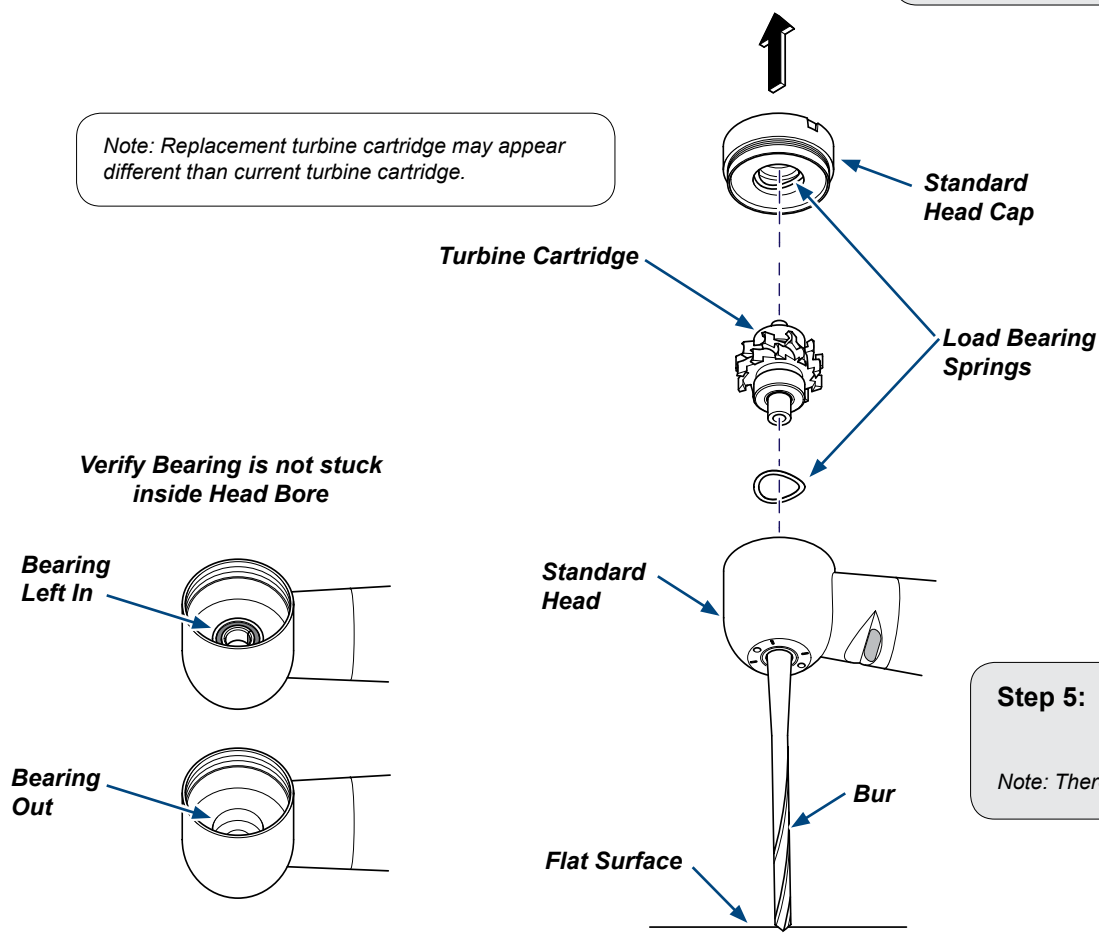
### Equipment Alert

The turbine has been manufactured and packaged in a "Clean Zone" for protection against contamination. Do not open new turbine pouch until the handpiece has been inspected and cleaned as mentioned in these instructions. This will assure maximum life and performance from the turbine.

**Step 4:** Once threads are disengaged, press bur down against flat surface to remove old turbine cartridge and head cap from head.

*Note: The bur will come out of the head bore with the turbine cartridge.*

*Note: Replacement turbine cartridge may appear different than current turbine cartridge.*



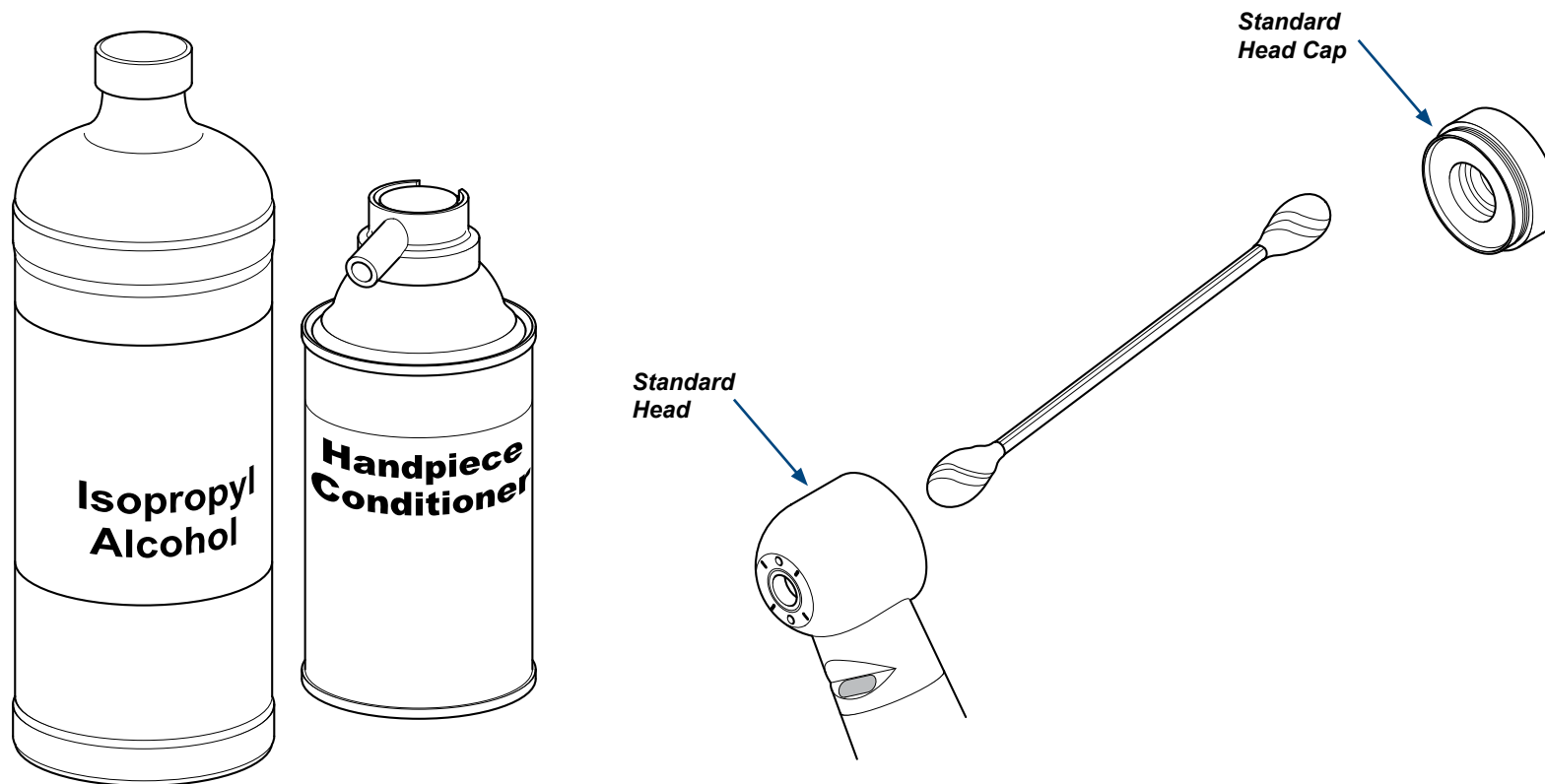
*Note: If bur doesn't rotate or spin the turbine cartridge is installed improperly or there is another component causing malfunction, contact Midmark Technical Service or authorized dealer.*

**Step 5:** Discard worn turbine cartridge, head cap, and load bearing spring from inside head.

*Note: There should be a load bearing spring inside the head cap, discard it also.*

ArtHalf

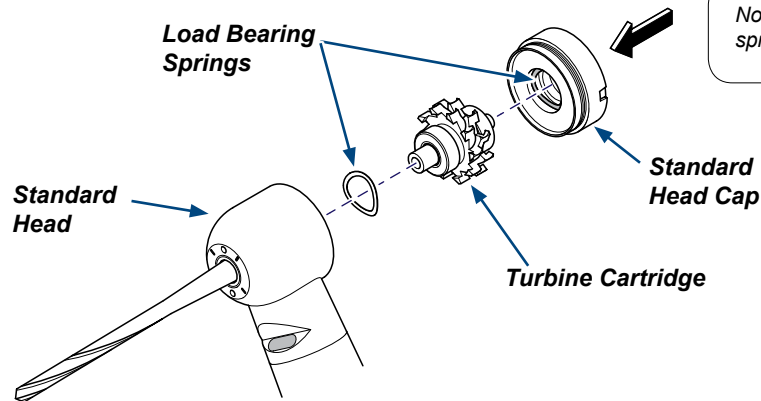
**Step 6:** Flush interior of head with alcohol and clean with cotton swab. Flush again and inspect for cleanliness. Repeat if necessary.



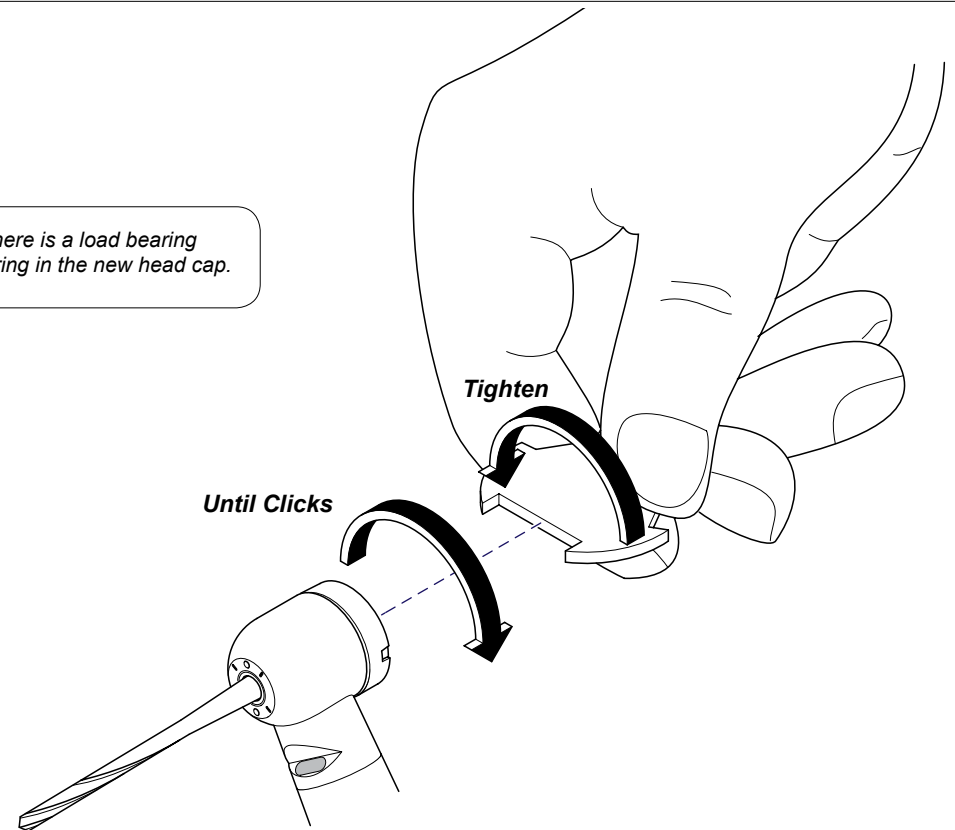
ArtFull

**Step 7:** Apply handpiece conditioner to entire area of head and interior of the new head cap.

**Step 8:** Install a new load bearing spring in the head.



*Note: Verify there is a load bearing spring and o-ring in the new head cap.*



**Step 9:** Remove the new turbine cartridge from the pouch, holding it by the shipping bur provided. Insert into head cap assembly until fully seated. Carefully insert entire assembly (bur end first) into turbine head until new head cap rests against back of turbine head. Turn counterclockwise with light pressure until seated as indicated by "click" sound, then turn clockwise with light inward pressure until fully engaged in head.



**WARNING**

**Double check to make sure the head cap has been fully tightened in this step. If not it may result in turbine ejecting itself during use!**

**Step 10:** Use wrench provided and tighten head cap with same force used to loosen it.

**Step 11:** Connect and run the handpiece at half speed for a minimum of one minute. Wipe off any visible lubricant. Your handpiece is now ready to operate.

**Limited Warranty**

Midmark replacement turbine cartridges with push button bur changing are warranted against defects in materials and workmanship for a period of 90 days from date of shipment. The handpiece must be operated and maintained in accordance with procedures outlined in the instructions. The handpiece must not be subjected to abuse or neglect. The handpiece must not have been repaired or disassembled by anyone other than Midmark or Authorized Midmark dealer, repair center or as directed by a Midmark Representative. Midmark will repair or replace, at its discretion, without charge any defective parts covered by this warranty provided the handpiece is returned to Midmark. Midmark makes no other warranties, expressed or implied.